



HEAD OFFICE
SHANGHAI YONGLI BELTING CO.,LTD.
 ADDRESS: NO. 58 XUWANG ROAD, XUJING TOWN,
 QINGPU DISTRICT, SHANGHAI, CHINA
 TEL: 0086-21-59884359
 FAX: 0086-21-59884382
 WEBSITE: www.yonglibelt.com
 EMAIL: info@yonglibelt.com

BRANCHES
YONGLI EUROPE B.V.
 Koolmand 3, 1724 BC Oudkarspel,
 The Netherlands

YONGLI SP.Z.O.O.
 Ul. Wojska Polskiego 8
 89-650 Czersk, Poland

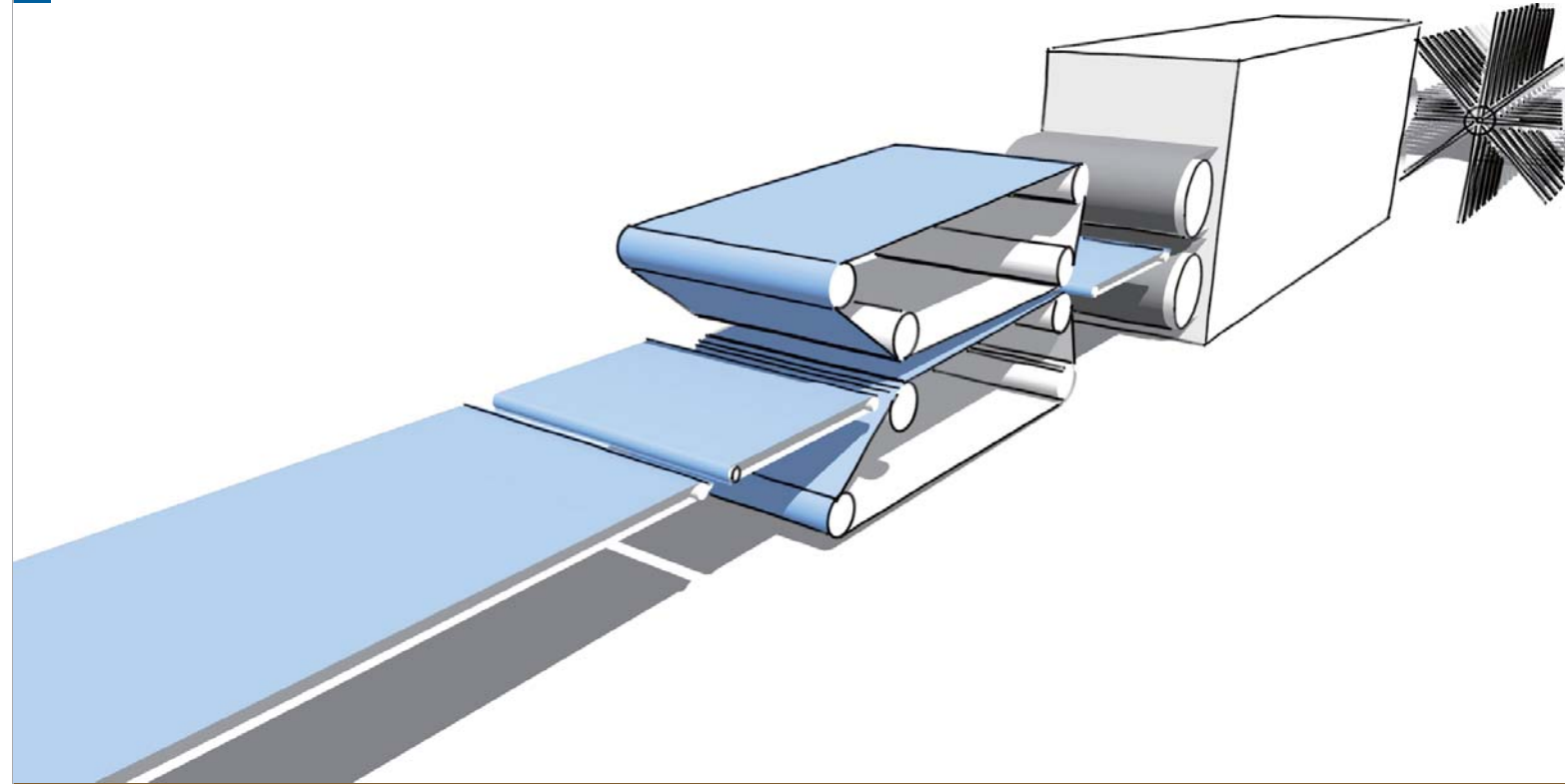
YONGLI AMERICA,LLC
 6625 Daniel Burnham Dr., Suite
 A, Portage, IN 46368, USA

YONGLI DEUTSCHLAND GMBH
 Veldweg 35a, 6075NL Herkenbosch,
 The Netherlands

YONGLI KOREA CO.,LTD
 29 Dangjaebong-ro, Paju-si,
 Gyeonggi-do, Korea

YONGLI ÖSTERREICH GMBH
 Bayernstrasse 81
 5071 Wals-Siezenheim,
 Austria

Wood



YONGLI - Engineer your movement



Wood Industry

- * High efficiency
- * High reliability
- * High stability

are always customers' pursuit and concern in wood industry.

With a great deal of experience in the conveying system, YongLi provides complete conveyor solutions for the wood manufacturing industry.

The key to success is to provide the products which suits the customer the best. With this goal in mind, YongLi has always been devoting themselves to making improvements and necessary changes as per customers' demands.

Whatever YongLi changes, we will guard our values:

- Close communication with customers.
- Listening to the wishes and demands of customers.
- Providing customized solutions.



- 1989, YongLi plastic-rubber industry&commerce Co.,Ltd was set up.
- 2001, YongLi Industrial Belting Co.Ltd was set up and started to manufacture light weight conveyor belts.
- 2005, YongLi Europe B.V. was set up in the Netherlands.
- 2006, YongLi set up the second manufacturing plant in Chongming, Shanghai.
- 2009, YongLi International Holding B.V. was set up in The Netherlands.
- 2010, YongLi set up a research and development department in the Netherlands.
- 2011.6, YongLi went public in Shenzhen Stock Exchange.
- 2013.2, YongLi Korea Co.,LTD was set up in Seoul, Korea.
- 2013.12, YongLi Sp.z.o.o. was set up in Czersk, Poland.
- 2015.1, YongLi America LLC was set up in Indiana, USA.
- 2015.3, YongLi Deutschland GmbH was set up in Europe.
- 2015.9, YongLi Österreich GmbH was set up in Europe.

YongLi offers solutions for:

PB, MDF/HDF, OSB, Plywood and LVL

By the advanced technology control, YongLi has developed an adapted range of PU and PVC belts in the industry of PB, MDF/HDF, OSB, Plywood and LVL.

Characteristics

- High precision
- High modulus
- Good wear resistance
- Long serve life

YongLi offers solutions for:

Sanding belt

According to many different requirements from customers, YongLi helps our customers choose the most suitable sanding belts.

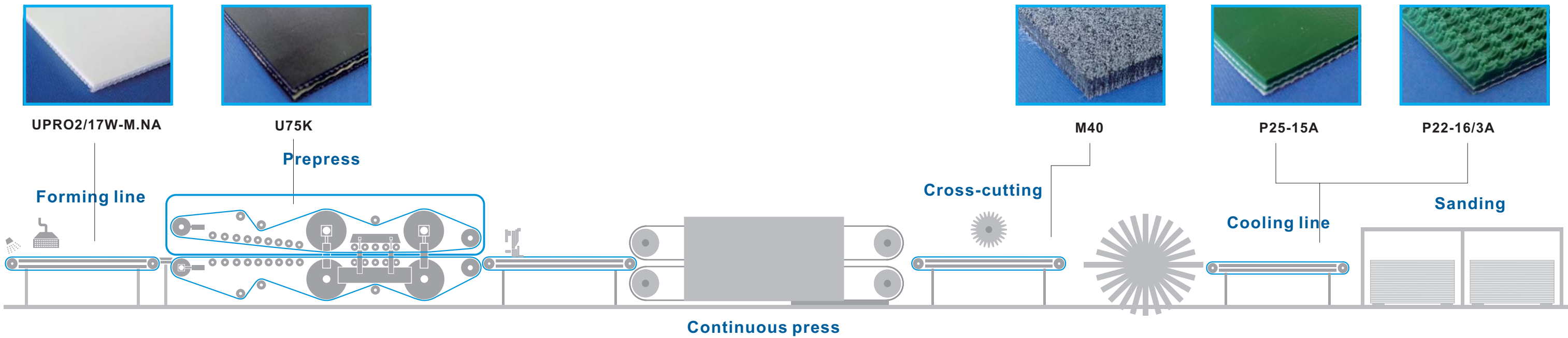
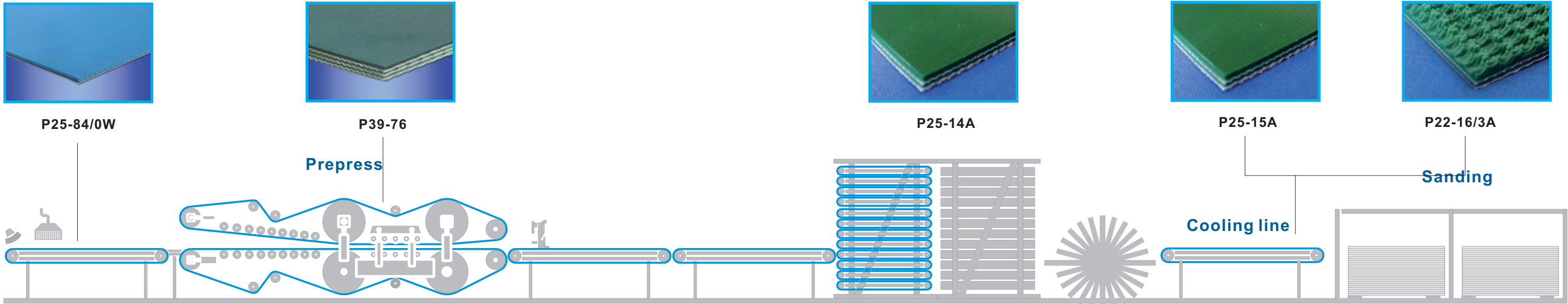
Characteristics

- High precision
- Good wear resistance
- Long serve life
- A variety of patterns available



PB, MDF/HDF, OSB, Plywood and LVL

The schematic drawings shown hereby, can not represent the complete industrial process. The suggestion and advice can only be considered as general indications. Due to the complexity of the technical requirements and process influences, there are of course some other possible solutions. Please inquire with your sales people for other YongLi products which would meet your requirements.



Variety of surface patterns – Best choice

To fulfill the specific application requirement, different surface patterns are the crucial part in the different wood production process.

On the basis of close interaction with engineers and customers, YongLi has developed more than 50 different kinds of profiles which would be able to meet the different requirements for efficient conveying applications.

Variety of bottom fabrics – Development: People-Oriented

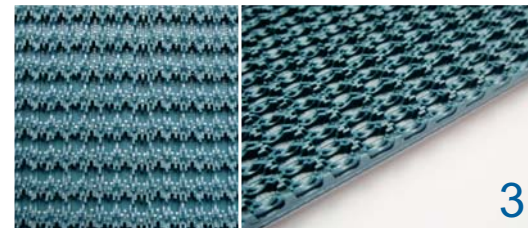
A comfortable and health-friendly working environment is also critical to the improving requirements of people-oriented conception.

By continuous Researches and Developments in the fabrics and close communication with customers, YongLi has always devoted itself to improving the working environment conditions.

YongLi set up a fabric R&D center with Shanghai Donghua Textile College, specially to make researches on the new fabric materials and structures.



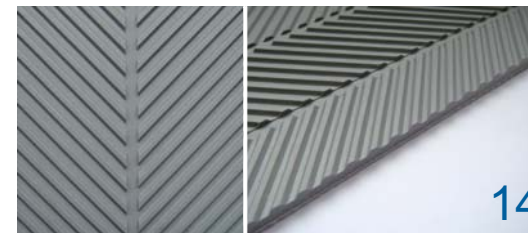
Name: Matt
Thickness:-
Property: Non adhesive surface
Code: 0
Width: 3000mm



Name: Rough top (Super grip)
Thickness: 2.4mm
Property: Incline conveying, very high friction
Code: 3
Width: 2000mm



Name: Square 20mm
Thickness: 3.8mm
Property:-
Application: Wood processing
Code: 13
Width: 2000mm



Name: Fishbone
Thickness: 1.8mm
Property:-
Application: Wood, Sea food processing
Code: 14
Width: 1450mm



Name: Capsule stud
Thickness: 3.0mm
Property:-
Application: Wood processing
Code: 28
Width: 1450mm



Name: Grinding square
Thickness: 4.5mm
Property:-
Application: Wood processing
Code: 43
Width: 1400mm

Standard products reference list

Code	Material	Color	Pattern	Total thickness (mm)	1%elongation (N/mm)	Min Roller Dia. (mm)	Temperature (°C)	Max width (mm)	Application						
									Forming line	Prepress	Cooling	Cutting	Feeding	Spraying line	Sanding
UPRO2/17W-M.NA	TPU	white	Matt	1.7	18	25	-20/+80	3200	●						
U75K	TPU	Black	Matt	3.8	50	250	-20/+80	3200		●					
P25-15A	PVC	green	Smooth	3.0	8	60	-15/+80	3000			●				
M40	Felt	Grey	Felt	4.0	11	80	-10/+120	2000				●			
P22-16/3D	PVC	Green	Super grip	5.3	8	80	-20/+60	2000			●				
P22-76/3D	PVC	Petrol	Super grip	5.3	8	80	-20/+60	2000			●				●
P22-16/19D	PVC	Green	Longitudinal rib	3.1	10	60	-20/+60	3000			●	●			
P39-76	PVC	Petrol	Smooth	5.8	45	250	-15/+80	3000		●					
P25-14A	PVC	Green	Smooth	2.0	8	40	-15/+80	3000					●		
P25-84/0W	PVC	Blue	Matt	2.0	8	40	-10/+90	3000	●						●
P32-36/28	PVC	Black	Capsule stud	8.5	18	100	-20/+60	1450							●
P32-36/13	PVC	Black	Square 20mm	8.5	18	100	-20/+60	2000							●
P22-46/14HD	PVC	Grey	Fishbone	5.5	10	80	-20/+60	1450							●
WL12-GY	PVC	Grey	Grinding square	9.0	22	90	-20/+60	1400							●
E26	PE	Trans	Smooth	2.6	12	80	-20/+60	3200							●

Disclaimer
All data are approximate values and defined under the following standard climatic conditions: 23 °C, 50 % relative humidity (ISO 554).
Further details may be obtained from our experts who will be pleased to assist you.

Due to the differences and changes of Material, Hardness, Conveying environment and Goods weight, the application situation will be variant. YongLi can not guarantee any individual case, but we will be very pleased to offer you our suggestion and make relevant laboratory tests according to your provided information or samples.